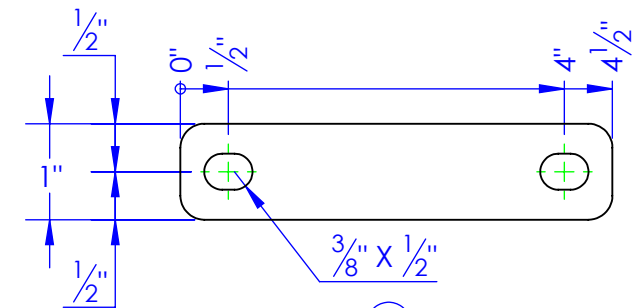
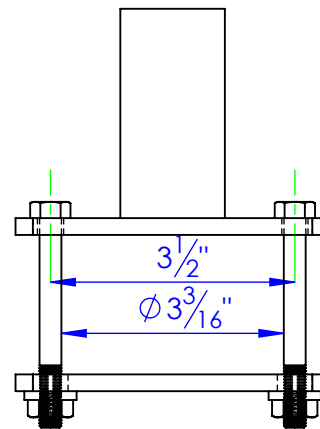
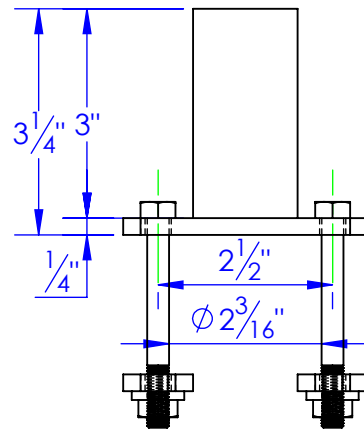
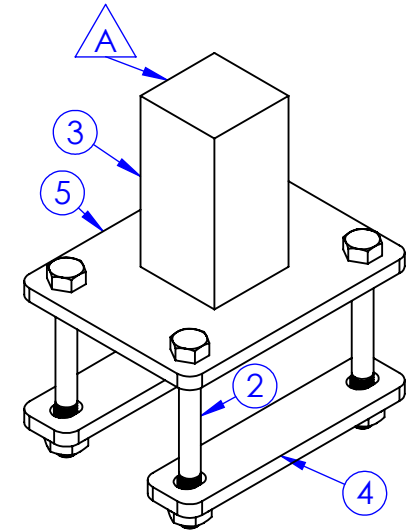
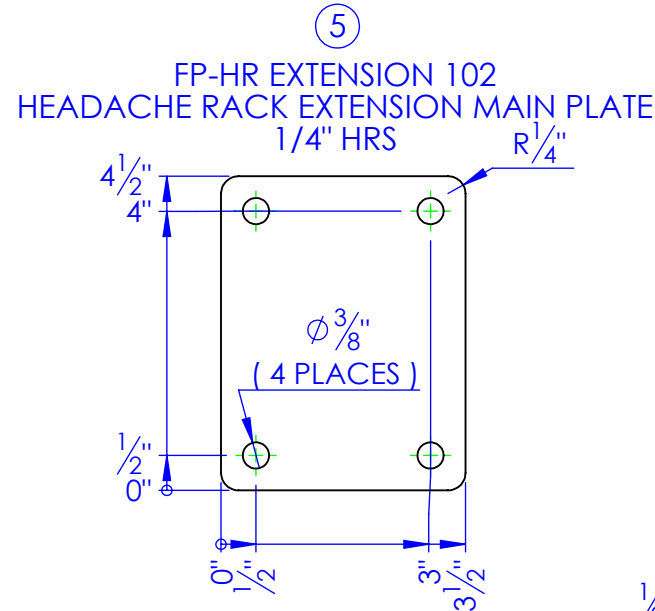
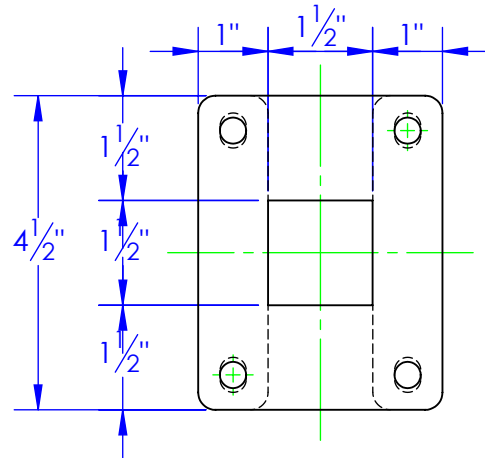


ITEM NO.	PART NUMBER	DESCRIPTION	DRAWING #	QTY.
1	BO-5/16 FLANGE NUT	5/16" FLANGE NUT	STOCK	4
2	BO-5/16 x 3 HCS	5/16" x 3 BOLT	STOCK	4
3	FL 1.5 X 1.5 L 3	LENGTH: 3"	STOCK	1
4	FP-HR EXTENSION 101	HEADACHE RACK EXTENSION U-BOLT PLATE	90-1900	2
5	FP-HR EXTENSION 102	HEADACHE RACK EXTENSION MAIN PLATE	90-1900	1

REVISIONS			
REV.	DESCRIPTION	DATE	APPROVED
A	R & D	6/14/2012	



④
FP-HR EXTENSION 101
HEADACHE RACK EXTENSION U-BOLT PLATE
1/4" HRS.

PROPRIETARY AND CONFIDENTIAL
THE INFORMATION CONTAINED IN THIS
DRAWING IS THE SOLE PROPERTY OF TRIPLE
C INC. ANY REPRODUCTION IN PART OR
AS A WHOLE WITHOUT THE WRITTEN
PERMISSION OF TRIPLE C INC. IS PROHIBITED.

DIMENSIONS ARE IN INCHES TOLERANCES: FRACTIONAL $\pm 1/16$ ANGULAR: MACH ± 1 BEND \pm TWO PLACE DECIMAL ± 0.10 THREE PLACE DECIMAL ± 0.005	
MATERIAL	---
DO NOT SCALE DRAWING	

NAME	DATE
DRAWN HEATH	7/20/2012
PART #	OP-HR-EXTENSION
ASM #	
COMMENTS: HEADACHE RACK TOP EXTENSION FOR PIPE	

P.O. BOX 248,
SABETHA, KS 66534

TRIPLE C
INC.

SIZE A	DWG. NO. 90-1900	REV. A
SCALE: 1:2.75	WEIGHT: 3.66	SHEET 1 OF 1